



# The Centerball Series from

[www.flm-gmbh.de](http://www.flm-gmbh.de)

**FLM GmbH**



## Tripod heads without Friction

Simple tripod head with rotary plate.  
Ball diameter: 18 mm  
Height: 56 mm  
Weight: 91 g  
Camera connection plate: 1/4"  
Bottom threads: 1/4"  
Maximum load capacity: about 6 kg



**CB 18**

Item No. 11 18 902

Simple tripod head including rotary plate.  
Ball diameter: 24 mm  
Height: 63 mm  
Weight: 137 g  
Camera connection plate: 1/4"  
Bottom threads: 3/8"  
Maximum load capacity: about 10 kg



**CB 24**

Item No. 11 24 901

Simple tripod head including rotary plate.  
Ball diameter: 38 mm  
Height: 72 mm  
Weight: 292 g  
Set screw: 1/4" - 3/8"  
Bottom threads: 3/8"  
Maximum load capacity: about 25 kg



**CB 38**

Item No. 11 38 901

## Panorama head



**PH 38 PRP**

Item No. 12 38 906

Panorama head for smooth infinitely variable tilting and panorama function. Ideal for spotting scope, for example, observing animals or video camera. Including power release basis and camera plate.

Ball diameter: 38 mm  
Height: 105 mm  
Weight: 516 g  
Camera connection plate: 1/4"  
Bottom threads: 3/8"  
Maximum load capacity: about 15 kg

**PH 38 QRP R**

Item No. 12 38 905

By rotating the handle clockwise, the tilted position is locked in place and by rotating counterclockwise it is released. Including quick release basis and plate. With friction and bottom rotation

Ball diameter: 38 mm  
Height: 101 mm  
Weight: 581 g  
Camera connection plate: 1/4"  
Bottom threads: 3/8"  
Maximum load capacity: about 15 kg

## Tripod heads with Friction

Smallest tripod head with friction and bottom rotation, extremely high prestressing force = tested load capacity because without locking knob.

Ball diameter: 24 mm  
Height: 68 mm  
Weight: 171 g  
Camera connection plate: 1/4"  
Bottom threads: 3/8"  
Maximum load capacity: about 15 kg



**CB 24 FB**

Item No. 12 24 902

Models including disks with 1/4" - 3/8" set screw (not glued)

With friction and base rotation.

Ball diameter: 32 mm  
Height: 77 mm  
Weight: 290 g  
Set screw: 1/4" - 3/8"  
Bottom threads: 3/8"  
Maximum load capacity: about 20 kg



**CB 32 FB**

Item No. 12 32 902

With friction and panorama basis  
Ball diameter: 32 mm  
Height: 82 mm  
Weight: 311 g  
Set screw: 1/4" - 3/8"  
Bottom threads: 3/8"  
Maximum load capacity: about 20 kg



**CB 32 FP**

Item No. 12 32 901



**PRS knob**

Item No. 12 18 901

PRS knob (Pan-Rast-Stop)  
Weight: 11g

## Tripod heads professional

Only three knobs with friction and panorama basis.  
Ball diameter: 38 mm  
Height: 90 mm  
Weight: 410 g  
Set screw: 1/4" - 3/8"  
Bottom threads: 3/8"  
Maximum load capacity: about 25 kg



**CB 38 F**

Item No. 12 38 901

With the tilting function, it becomes a 2-D inclinator.  
Ball diameter: 38 mm  
Height: 90 mm  
Weight: 426 g  
Set screw: 1/4" - 3/8"  
Bottom threads: 3/8"  
Maximum load capacity: about 25 kg



**CB 38 FT**

Item No. 12 38 902

Models including disks with 1/4" - 3/8" set screw (not glued)

With friction and panorama basis.  
Ball diameter: 48 mm  
Height: 99 mm  
Weight: 567 g  
Set screw: 1/4" - 3/8"  
Bottom threads: 3/8"  
Maximum load capacity: about 45 kg



**CB 48 F**

Item No. 12 48 903

Lighter due to hollow ball.  
Ball diameter: 48 mm  
Height: 99 mm  
Weight: 582 g  
Set screw: 1/4" - 3/8"  
Bottom threads: 3/8"  
Maximum load capacity: about 45 kg



**CB 48 FT**

Item No. 12 48 901



**CB 58 F**

Item No. 12 58 901

A strong tripod head with high load capacity. With only 3 knobs.  
Ball diameter: 58 mm  
Height: 111 mm  
Weight: 778 g  
Set screw: 1/4" - 3/8"  
Bottom threads: 3/8"  
Maximum load capacity: about 60 kg



**CB 58 FT**

Item No. 12 58 903

With friction, panorama basis and tilting unit.

Ball diameter: 58 mm  
Height: 111 mm  
Weight: 783 g  
Set screw: 1/4" - 3/8"  
Bottom threads: 3/8"  
Maximum load capacity: about 60 kg

## Pan Rast System



The Models CB 38 FT, CB 48 FT and CB 58 FT are available with PRS



or can be upgraded

## Power Release System

The reduction ratio of the threads on the power release basis provides a high tightening force for the camera. The cork plate is connected with the basis so that it cannot be twisted.

Diameter: 45 mm  
Weight: 53 g  
Bottom threads: 3/8"



### PRB 45

Item No. 12 45 901

Small camera plate fits with basis PRB 45

Camera connection: 1/4"  
Weight: 4 g

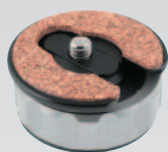


### PRP 45

Item No. 12 45 902

PRP 45 set consisting of:  
Basis 12 45 901 and plate 12 45 902

Weight: 57 g



### PRP 45 Set

Item No. 12 45 909



### PRB 55

Item No. 12 55 901



### PRP 55

Item No. 12 55 902 (standard)  
Item No. 12 55 903 (with pin\*)

Camera plate that fits with basis PRB 55  
Camera connection: 1/4"  
Weight: 8 g  
optional with pin (diameter 5 mm)\*

\* Always fits, because of the pin sliding clamping screw.



### PRP 55 Set

Item No. 12 55 909

PRP 55 Set bestehend aus:  
Basis 12 55 901 und  
Platte 12 55 902 (Standard)

Gewicht: 107 g

The expanded supporting surface of the new power release basis and the large diameter of the tension ring provide higher stability for the camera.

Diameter: 55 mm  
Weight: 99 g  
Bottom threads: 3/8"

Explanation of the product names for tripod heads and camera plates:

CB Centerball (tripod head)  
38... ball diameter

F Friction

T Tilt

R Pan-Catch(Rast)-Stop system

B Turning of bottom

PRP Power Release Plate

QRB Quick Release Plate

PRB Power Release Basis

QRP Quick Release Basis

## Quick Release System

One "click" and the camera is secured, but can be displaced in the quick release basis. One "turn" and the camera is firmly fixed in the desired position.

Length: 70 mm  
Weight: 100 g  
Basis connection: 3/8"



### QRB 70

Art.-Nr. 12 70 901

New Quick Release System with integrated plate locking device and level.

Long camera plate movable range 40 mm  
Short camera plate movable range 15 mm  
Length: 45 mm  
Weight: 68 g  
Basis connection: 3/8"



### QRB 40

Art.-Nr. 12 40 901

For the quick release bases QRB 40 and QRB 70  
Camera connection: 2 slotted screws 1/4"  
Weight: 54 g



### QRP 70

Item No. 12 70 902

Set consists of: Basis 12 70 901 and plate 12 70 902  
Weight: 153 g



### QRP 70 Set

Item No. 12 70 909

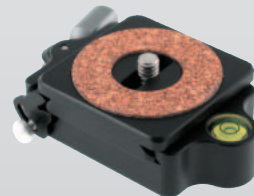
For the quick release bases QRB 40 and QRB 70  
Camera connection: 1/4"  
Weight: 35 g



### QRP 40

Item No. 12 40 902

Set consists of: Basis 12 70 901 and plate 12 70 902  
Weight: 102 g



### QRP 40 Set

Item No. 12 40 909

## Leveling System

### New Pan-Rast-System PR 48

Pan-click plate with four selectable angular increments  
15°-30°-45°-90°. With spirit level.



### PR 48

Item No. 12 48 905

Connection thread tripod: 3/8"

Connection QRB: Slotted screw 3/8"  
Diameter: 65 mm  
Height: 40 mm  
Weight: 365 g

For example:

L-bracket

QRB 70

PR 48

LB 30



### LB 60 Leveling base

For the horizontal orientation of the camera head by +/- 15° in all directions for example, ideal for panorama shots. With spirit level.



Height: 44 mm

Weight: 230 g

Top and bottom threads: 3/8"  
Maximum load capacity: about 30 kg

### LB 60

Item No. 12 60 901

### LB 30 Leveling base

For the horizontal orientation of the camera head by +/- 30° in all directions for example, ideal for panorama shots. With spirit level.



Height: 57 mm

Weight: 258 g

Set screw: 1/4" - 3/8"

Bottom threads: 3/8"  
Maximum load capacity: about 45 kg

### LB 30

Art.-Nr. 12 30 901

## New accessories for basic models

### QRP 160

For the quick release bases QRB 40 and QRB 70.

Camera connection: 2 slotted screws 1/4"  
Length: 160 mm  
Weight: 100 g



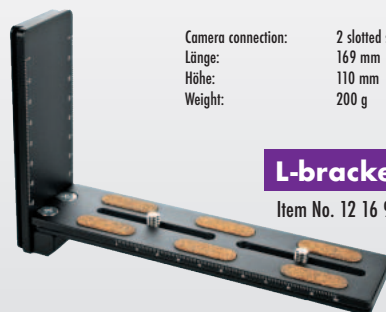
### QRP 160

Item No. 12 16 902

### L-bracket

For the quick release bases QRB 40 and QRB 70.

Camera connection: 2 slotted screws 1/4"  
Länge: 169 mm  
Höhe: 110 mm  
Weight: 200 g



### L-bracket

Item No. 12 16 901

### P 48

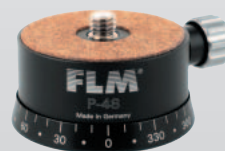
Panorama plate with high load capacity and ball track.

Set screw: 1/4" - 3/8"

Bottom threads: 3/8"

Height: 40 mm

Weight: 212 g



### P 48

Item No. 12 48 904

## FLM patents

### Quick Release Plate (QRP)

The newly developed changing system with dovetail guide allows the first really quick change of the camera. Push the camera with plate onto the rear guide, one click downward and the camera is secured in place, but can still be moved. With a short turn of the locking lever, the camera is locked firmly in the desired position.

### Friction + Locking

A new clamping ring-wedge allows a direct implementation of hand torque on the adjustment knob.

This is a much higher holding power (maximum capacity) of the ball produced.

### PRS Knob

Pan-Rast-Stop (Pan-Catch-Stop): Easier assembly and disassembly for tripod heads with panorama function, in addition 15° of click-lock positioning. (All FT models can be upgraded.)

### Twist Grip for PH 38

For the PH 38, the video camera or the spotting scope is positioned with the guide grip and is locked into any position with a right turn of the grip.

### Tilt Function

All FT models are equipped with this additional operating element. The tilt function makes the Centerball into a **2-D inclinometer**. In this way, the ball can be moved in a precise plane. The friction is not influenced by this.

## new

### Pan-Rast-System, PR 48

The new Pan-click plate with four selectable angular increments 15°-30°-45°-90°. Using a Gliding ball is set to the individual sub-steps angle conveniently on the handle. With the Pan-handle any set position is fixed in stone.

### Precision and Functionality – Made in Germany

This new Centerball Series for photo and light technology was developed based on these **long years of experience** and suggestions from our international customers.

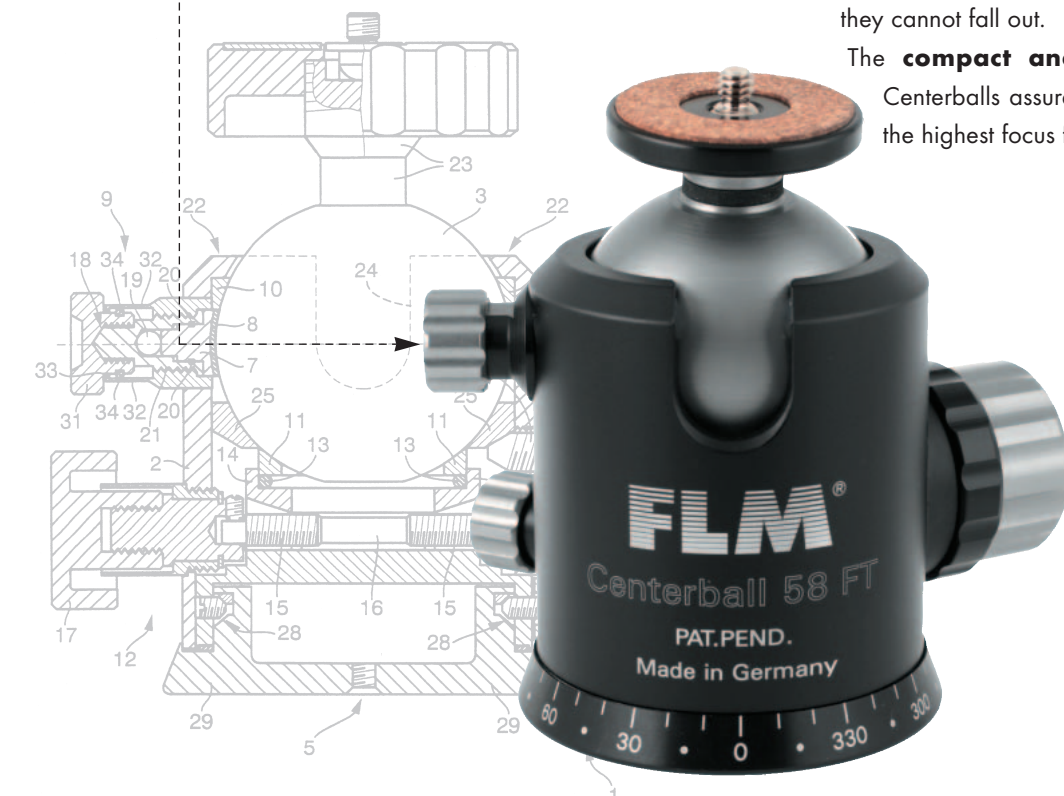
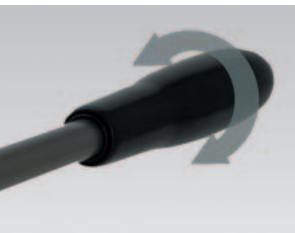
The **precision of the ball**, the heart of a tripod head, determines the quality of the FLM Centerball Series. The balls are produced on CNC machines. This insures movement that is as smooth as silk and gives the Centerball an **incomparable setting precision**.

Coated ball surfaces and the refined construction allow precision use both outdoors and in the studio **without any servicing**.

Casing, disks and balls including all adjusting and locking knobs are made of a **high quality aluminum alloy**.

In order to insure that you don't make a mistake when using the large **ergonomic operating elements**, the adjustment screws have different dimensions and are secured so they cannot fall out.

The **compact and light construction** of the FLM Centerballs assures extreme vibrational stability and thus the highest focus for your photos.



# FLM GmbH

Accessories for Photography,  
Lighting Engineering  
and Metrology

Schuetzenstrasse 18  
79312 Emmendingen, Germany  
Phone + 49 76 41- 57 17 22  
Fax + 49 76 41- 57 17 23  
www.flm-gmbh.de  
info@flm-gmbh.de